

**BRAND INDIA ENGINEERING
E-CATALOGUE**

Date: 09-08-2025

Fieldman Engineers Pvt. Ltd.

**171/172, Aji Industrial Area, Aji GIDC,
Phase-II, Main Road
RAJKOT
PIN - 360003**

**Vivek Kamani
PHONE - +91 281
2387074
EMAIL -
vkamani@doctorpumps.in
WEB -
www.doctorpumps.in**

Incorporated in 1988, we are a reputed manufacturer and exporter of a wide range of Centrifugal Pumps, Tractor Driven Pumps, Self-Priming mud pumps, Water Circulating Pumps, Diesel Engines and Power Alternators under "Doctor" brand. Our products and systems are used by our customers across India and abroad for various applications like Irrigation, Industrial, Mine Dewatering, Marine, Deep Well Boring, Flood Control, Fisheries, etc. The motto "Quality at par Excellence" has been an integral part of our organisation since its inception and that is why our customers trust Doctor Pumps as a reliable solution for their application. Be it a farmer when he needs to pump water from a Canal up to his field 10 km away or be it Municipal Corporations when they need to remove water from an Underpass after heavy rainfall, Doctor pumps have been a preferred and a reliable choice. We have always believed in providing a solution to our customer rather than a product and that is why Doctor Pumps haven been providing innovative solutions time and again. Like Doctor Pumps is a pioneer of Tractor PTO Driven Centrifugal Pumps and Power Alternators which has proved to be a portable and economical solutions for our customers.

Products Description

BRAND INDIA ENGINEERING E-CATALOGUE

Diesel Engine Driven Centrifugal Pump

Technical Details

Air Cooled/ Water Cooled Diesel Engine driven Centrifugal Pump mounted on a Base Frame or a Trolley with optional Self Start and a Engine Parameter Monitoring Panel. Available Delivery head upto 150 meters and discharge upto 119 Lps.

ITC HS Code

841370

Certification Category

System Standard

Certification/ Standard

ISO

Issuing Agency

TÜV SÜD

Date of Issue

07-03-2010

Date of Expiry

14-08-2019

Certificate Image

Certification Category

Product Standard

Certification/ Standard

IS: 6595

Issuing Agency

Bureau of Indian Standards

Date of Issue

23-11-2016

Date of Expiry

23-11-2017

Certificate Image

End Use Sectors

Control, Construction, etc

Product Images



BRAND INDIA ENGINEERING E-CATALOGUE

● Model: FMCG - 3 (80 x 65)

● Technical Specifications:

1. Volute Casting Type Direct Couple Turbo-Gear Pump with Triangle Flange
2. Inlet & Outlet Size (in mm): 80 x 65, Center Delivery
3. Required HP: 18 HP
4. RPM: 1500 Clock-wise rotations (Pump RPM: 1500 & Gear Box Ratio 1:2)
5. Head Range (in meters): 25 to 30 meters
6. Discharge (in lps): 25 to 30 lps per second
7. Suitable for direct couple with high speed diesel engine / electric motor
8. Available Size: 80 x 65
9. Special Features: Double Bearing & Suitable for High Head Industrial Applications

doctor
PUMPS
<http://www.doctorpumps.in/>



● Model: FMCG - 5 (125 x 125) ● Technical Specifications:

1. Volute Casting Type Direct Couple Turbo-Gear Pump
2. Inlet & Outlet Size (in mm): 125 x 125, Center Delivery
3. Required HP: 22 HP
4. RPM: 1500 Anti-clock-wise rotations
5. Head Range (in meters): 22 to 37 meters
6. Discharge (in lps): 58 to 45 lps per second
7. Suitable for direct couple with high speed diesel engine / electric motor
8. Available Size: 80 x 65 | 80 x 80 | 100 x 100 | 125 x 125 | 150 x 150 | 200 x 200
9. Available with Triangle Flange & 7-shaft hole as required
10. Special Features: Double Bearing & Gland rope type seal

doctor
PUMPS
<http://www.doctorpumps.in/>



● Model: FMCG - 15 (80 x 65) ● Technical Specifications:

1. Volute Casting Direct Couple Centrifugal Pump
2. Inlet & Outlet size (in mm): 80 x 65, Center Delivery
3. Required HP: 12 HP
4. Center Height: 203mm
5. RPM: 1500 Anti-clock-wise rotations
6. Head Range (in meters): 22 to 37 meters
7. Discharge (in lps): 20 to 12 lps per second
8. Suitable for direct couple with high speed diesel engine / electric motor
9. Available Size: 65 x 51 | 80 x 40 | 80 x 65 | 100 x 80 | 150 x 150
10. Available with Triangle Flange
11. Special Features: Double Bearings & Double Gland rope type seal

doctor
PUMPS
<http://www.doctorpumps.in/>



Tractor PTO Driven Centrifugal Pumps

Technical Details

Centrifugal Pumps driven by Tractor PTO shaft and with an innovative rotations incremental Gearbox and a 3-point hitch mount. Available Delivery Head upto 150 meters and Discharge upto 119 Lps.

ITC HS Code

841370

Certification Category

System Standard

Certification/ Standard

ISO

Issuing Agency

TÜV SÜD

Date of Issue

07-03-2010

Date of Expiry

14-08-2019

Certificate Image

End Use Sectors

Irrigation, Industrial, Construction, Mining, Flood Control, etc.

BRAND INDIA ENGINEERING E-CATALOGUE

Product Images



BRAND INDIA ENGINEERING



Industrial Self-Priming Pumps

Technical Details

Multistage Self-Priming pumps with Brass/Graded Cast Iron Impeller and Casing. Specially designed for Industrial applications with Head upto 15 meters.

ITC HS Code

841370

Certification Category

Product Standard

Certification/ Standard

ISO

Issuing Agency

TÜV SÜD

Date of Issue

07-03-2016

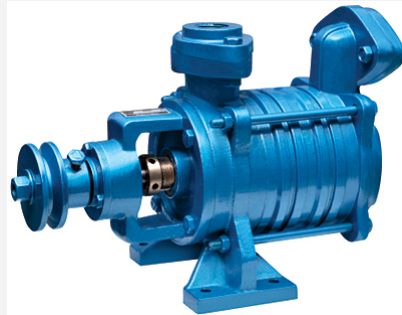
Date of Expiry

14-08-2018

Certificate Image

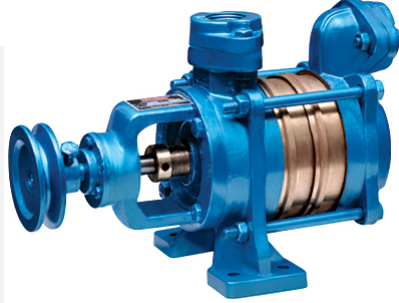
End Use Sectors

Product Images



on Control,

BRAND INDIA ENGINEERING E-CATALOGUE



Water Circulation Pump

Technical Details

Wide range of Circulation Pump for Cooling Water for Stationary Engines or other fluids.

ITC HS Code

841330

Certification Category

System Standard

Certification/ Standard

ISO

Issuing Agency

TÜV SÜD

Date of Issue

07-03-2016

Date of Expiry

14-08-2018

Certificate Image

End Use Sectors

Product Images



griculture, etc

BRAND INDIA ENGINEERING E-CATALOGUE



Small Engine Driven Water Pump

Technical Details

Pumps driven by high speed small portable engines with various models, sizes and sealing.

ITC HS Code

841370

Certification Category

System Standard

Certification/ Standard

ISO

Issuing Agency

TÜV SÜD

BRAND INDIA ENGINEERING E-CATALOGUE

Date of Issue 07-03-2016

Date of Expiry 14-08-2018

Certificate Image

End Use Sectors

Product Images



BRAND INDIA ENGINEERING E-CATALOGUE

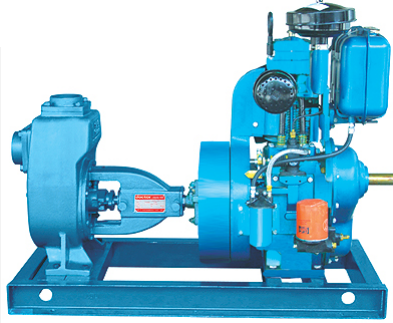


Self Priming Mud Pumps

Technical Details	Self-Priming pumps for viscose fluids with solids and driven by Diesel engine or Electric Motor. Available Head upto 36 Meters and Discharge upto 77 Lps
ITC HS Code	841370
Certification Category	System Standard
Certification/ Standard	ISO
Issuing Agency	TÜV SÜD
Date of Issue	07-03-2016
Date of Expiry	14-08-2018
Certificate Image	---
Certification Category	Product Standard
Certification/ Standard	IS : 6595
Issuing Agency	Bureau of Indian Standards
Date of Issue	23-11-2016
Date of Expiry	23-11-2017
Certificate Image	---
End Use Sectors	Sewage Treatment Plant, Bio-Gas Plants, Effluent Dewatering, Chemical Industry, Petrochemical and Petroleum Industry, Textile Plants, Thermal Plants, etc

BRAND INDIA ENGINEERING E-CATALOGUE

Product Images



Sectors of Interest

Pumps, Engines, Power Generators

Indigenous

Is OEM Supplier?

Remarks : We are OEM Supplier for many reputed Brands in India and abroad and we are positive for more such partnerships.

Is After Sales Service Provider?

Yes

BRAND INDIA ENGINEERING E-CATALOGUE

Importance of niche products	<p>Our products have proved to be a reliable pumping solution for applications like Irrigation, Mining, Flood Control, Industrial, etc. For Example our pumps are operational for pumping Water from a Canal upto a field 10 km away for irrigation. Here the importance of the product is that no electricity is available in such remote areas and therefor farmers rely on Stationary Engine Driven Pumps or Tractor Driven Pumps. For Example our Tractor PTO Driven Pumps are used as Standby system for Emergency situations like Floods. Here high discharge pumps can be used to remove water as quickly as possible.</p>
Potential market of niche products	<p>For irrigation applications: India, Africa, Middle East, Central and Latin America For Industrial applications: Chemical Industries, Ceramic Industries, Foundries, Sugar Industry, Edible Oil, Textiles, etc. Other potential markets: Mining, Emergency Flood Control, Fire Fighting, Fisheries, Domestic applications, etc.</p>
Product Supply Record	<p>Gov. of Iraq funded irrigation project wherein Water Pumpsets were provided to the Farmers from Govt. Here we provided complete Pumpsets with Air Cooled Diesel Engine. Supply of Irrigation Pumps to Honduras in Central America. Supply of Centrifugal Pumps to Egypt. Supply of Tractor Driven Pumps and Power Alternators to Australia. Supply of Irrigation Pumpsets to Ghana in Africa.</p>
Patented Technologies	
Awards/Accolades	