

BRAND INDIA ENGINEERING E-CATALOGUE

Date: 21-04-2025

SYNO ENGINEERS

**K-11, Site No. 3, Panki Industrial Area
KANPUR
PIN - 208022**

Mr. Malkeet Singh
PHONE - +91 512
9838392839
EMAIL -
info@synopumps.com
WEB -
www.synopumps.com

Syno is an oldest and prestigious manufacturer of Progressive Cavity Pumps and Retrofit Spare Parts in India since 1975. serving wide customer base in process industries like Waste Water, Grouting, Pulp & Paper, Food, Sugar & Distillery, Pharmaceuticals, Oil, Power, Fertilizer and Chemical Industries etc. With 40 years of vast experience in fluid engineering spanning over 300 fluid types, 10,000 pumps installed, Syno pumps endeavors to provide world class quality pumps with best-in-industry delivery schedule. Syno pumps also provides spare parts for other brands and repair refurbishing/reverse engineering services. At present, Syno Pumps is engaged in the industry as a manufacturer and exporter of an extensive range of pumps including Screw Pumps, Vertical Slurry Pumps, Sludge Pumps, Progressive Cavity Pumps, Industrial Pumps, Chemical Pumps, Open Throat Pumps, Vertical Pumps, Small Multipurpose Pumps, Bore Hole Pumps, Hollow Shafts, etc.

Products Description

Industrial Transfer Pump - 'S' Series

BRAND INDIA ENGINEERING E-CATALOGUE

Technical Details

'S' Series is ideal for handling slurries, viscous, shear sensitive or two or tri phase mixtures or when applications require, significant suction lift capabilities. These pumps are used for a wide variety of pumping and transfer duties. The design of Pump is ideally suited for both low to high flow applications and also allows for the development of multi-stage pumps that increase the pressure handling capabilities. These Pumps are found tough rugged industrial applications handling anything from abrasive slurries, aggressive or reactive chemicals, to viscous liquids, oils, or suspensions and aqueous solutions at elevated temperatures. They are known for their flawless performance, efficiency & trouble-free operation along with long service life features. The Standard "S" Series Pump is of Cast Iron construction with liquid touchable parts of alloy steel / stainless steel, depending on the fluids to be handled. Shaft Sealing is ensured by Gland Packing & Mechanical Seal (optional). These pumps are available at highly affordable rates in various sizes and capacity.

ITC HS Code

841360

Certification Category

Product Standard

Certification/ Standard

CE

Issuing Agency

UK Certification & Inspection Ltd.

Date of Issue

13-09-2016

Date of Expiry

12-09-2017

BRAND INDIA ENGINEERING
E-CATALOGUE

Certificate Image



Certification Category

Product Standard

Certification/ Standard

ISO

Issuing Agency

Quest Certification (P) Ltd.

Date of Issue

21-12-2015

Date of Expiry

20-12-2018

BRAND INDIA ENGINEERING Certificate of Registration CATALOGUE

This is to certify that compliance of Quality Management System of

SYNO ENGINEERS

K-11, Site - 3, Panki Industrial Area,
Kanpur - 208 022 (U.P.) India

Has been assessed and found to conform to the requirements of

ISO 9001 : 2008

for the scope of activities :

**Designing, Manufacturing and Supply of Progressive Cavity Pumps
& Spare Parts**

Permissible Exclusion : NIL

Certificate No : RO91/JA/1657
JAS-ANZ Accreditation No : M4430310/C

Issue Date : 21.12.2015
Certificate Valid Upto : 20.12.2018



www.jas-anz.org/register

Surveillance Audit : 2nd Year : 01.12.2016
3rd Year : 01.12.2017

For and on behalf of Quest Certification (P) Ltd

[Signature]
Head of Certification

The certificate is valid only if the annual surveillance mark is present.

The Validity of this Certificate can be verified from www.questcertification.com

The Registration does not assure the quality of yields under the firm's production / services

Quest Certification (P) Ltd

Regd Office: Plot No. 44, Door No. 6, 4th Cross Street, NGO Colony, Adambakkam, Chennai - 60, Tamil Nadu, India
Accredited by Joint Accreditation System of Australia and New Zealand (www.jas-anz.org/register)

Certificate Image

Certification Category

Product Standard

Certification/ Standard

ATEX

Issuing Agency

Quantus Management System (P) Ltd.

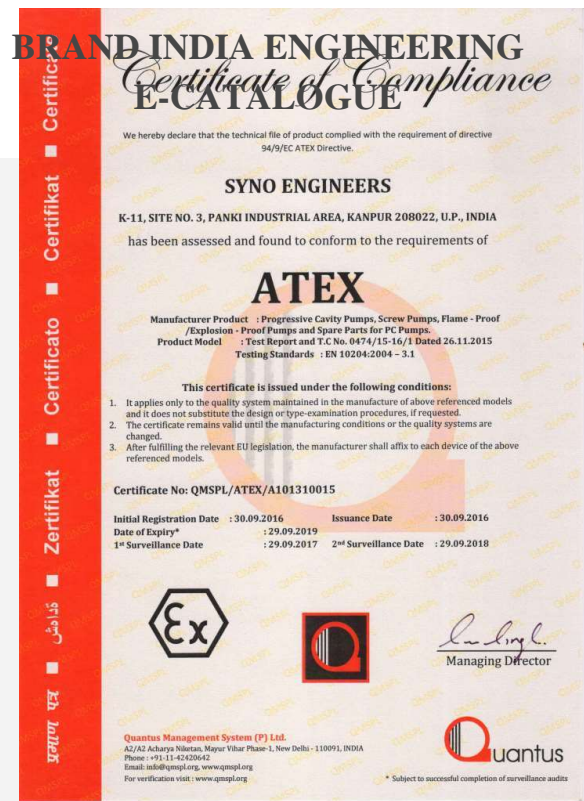
Date of Issue

30-09-2016

Date of Expiry

29-09-2019

Certificate Image



End Use Sectors

Waste Water, Grouting, Pulp & Paper, Food, Sugar & Distillery, Pharmaceuticals, Industries etc.

Product Images



Wide Throat / Hopper Pumps - 'W' Series

BRAND INDIA ENGINEERING E-CATALOGUE

Technical Details

Pumping highly viscous, solids laden, non-Newtonian fluids are a difficult and complex process. At Syno, we have the knowledge and expertise to help you. The Wide Throat "W" Series has been designed to handle highly viscous materials, such as sludges, slurries, thick non-flowing pastes and de-watered sludge cake which ensures easy and efficient handling of high-viscosity fluids with viscosities up to 1,00,000cP. The design of the "W" Series is such that many different applications can be handled. This transfer pump consists of an enlarged rectangular inlet with a screw conveyor to assist the product into the pumping element. The hopper type suction inlet allows gravity flow of extreme viscous materials on to the augur cum coupling rod which pushes the substance into the pumping cavity. For the many difficult and varied applications encountered, the pumps are run at a relatively slow speed, therefore the pump will handle shear sensitive products with minimal product damage, abrasive solids in suspension and highly viscous materials. This pump offers higher level of performance than standard open throat style pumps.

ITC HS Code	841360
Certification Category	Product Standard
Certification/ Standard	ISO
Issuing Agency	Quest Certification (P) Ltd
Date of Issue	21-12-2015
Date of Expiry	20-12-2018

BRAND INDIA ENGINEERING Certificate of Registration CATALOGUE

This is to certify that compliance of Quality Management System of

SYNO ENGINEERS

K-11, Site - 3, Panki Industrial Area,
Kanpur - 208 022 (U.P.) India

Has been assessed and found to conform to the requirements of

ISO 9001 : 2008

for the scope of activities :

**Designing, Manufacturing and Supply of Progressive Cavity Pumps
& Spare Parts**

Permissible Exclusion : NIL

Certificate No : RO91/JA/1657
JAS-ANZ Accreditation No : M4430310/C

Issue Date : 21.12.2015
Certificate Valid Upto : 20.12.2018



www.jas-anz.org/register

Surveillance Audit : 2nd Year : 01.12.2016
3rd Year : 01.12.2017

For and on behalf of Quest Certification (P) Ltd

[Signature]
Head of Certification

The certificate is valid only if the annual surveillance mark is present.

The Validity of this Certificate can be verified from www.questcertification.com

The Registration does not assure the quality of yields under the firm's production / services

Quest Certification (P) Ltd

Regd Office: Plot No. 44, Door No. 6, 4th Cross Street, NGO Colony, Adambakkam, Chennai - 89, Tamil Nadu, India
Accredited by Joint Accreditation System of Australia and New Zealand (www.jas-anz.org/register)

Certificate Image

Certification Category

Product Standard

Certification/ Standard

CE

Issuing Agency

UK Certification & Inspection Ltd.

Date of Issue

13-09-2016

Date of Expiry

12-09-2017

BRAND INDIA ENGINEERING
E-CATALOGUE

Certificate Image



Certification Category

Product Standard

Certification/ Standard

ATEX

Issuing Agency

Quantus Management System (P) Ltd.

Date of Issue

30-09-2016

Date of Expiry

29-09-2019

BRAND INDIA ENGINEERING
Certificate of Compliance
E-CATALOGUE

We hereby declare that the technical file of product complied with the requirement of directive
94/9/EC ATEX Directive.

SYNO ENGINEERS

K-11, SITE NO. 3, PANKI INDUSTRIAL AREA, KANPUR 208022, U.P., INDIA
has been assessed and found to conform to the requirements of

ATEX

Manufacturer Product : Progressive Cavity Pumps, Screw Pumps, Flame - Proof /Explosion - Proof Pumps and Spare Parts for PC Pumps.
Product Model : Test Report and T.C No. 0474/15-16/1 Dated 26.11.2015
Testing Standards : EN 10204:2004 - 3.1

This certificate is issued under the following conditions:

1. It applies only to the quality system maintained in the manufacture of above referenced models and it does not substitute the design or type-examination procedures, if requested.
2. The certificate remains valid until the manufacturing conditions or the quality systems are changed.
3. After fulfilling the relevant EU legislation, the manufacturer shall affix to each device of the above referenced models.

Certificate No: QMSPL/ATEX/A101310015

Initial Registration Date	: 30.09.2016	Issuance Date	: 30.09.2016
Date of Expiry*	: 29.09.2019		
1 st Surveillance Date	: 29.09.2017	2 nd Surveillance Date	: 29.09.2018



Lu Ling
Managing Director

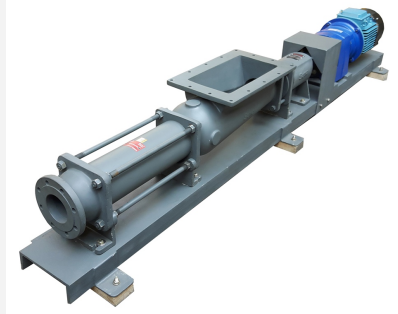
Quantus Management System (P) Ltd.
A2/A2 Acharya Nilotan, Mayur Vihar Phase-1, New Delhi - 110091, INDIA
Phone : +91-11-42420642
Email: info@qmspl.org, www.qmspl.org
For verification visit : www.qmspl.org

* Subject to successful completion of surveillance audits

Certificate Image

End Use Sectors

Product Images



r, Food, Sugar & Distillery, Pharmaceuticals, industries etc.

Hygienic & Food Grade Pumps - 'F' Series

BRAND INDIA ENGINEERING E-CATALOGUE

Technical Details

Syno 'F' Series is perfect for food pumps and pumping systems for hygienic manufacturing industries including the food, beverage, biotech and pharmaceutical sectors. Food products such as dairy, baked goods, cereals, beverages and confectionary demand pumps that meet today's hygiene standards and are able to handle products with care. With these pump, you can easily handle a wide range of viscous fluids and solid ingredients with next to no product damage. These pumps are typically manufactured from stainless steel or other food grade materials, to ensure the food is being handled in a way that is safe for human consumption. Depending on the viscosity of the liquid being transferred and whether the product is shear sensitive, differing pump technologies may be used for a food grade pump. We offer models specifically designed to handle viscous, delicate or temperature-sensitive ingredients and never compromise on the critical aspect of hygiene. Syno Food Pumps have the lowest product damage rates in the industry and are the pump of choice for food processors around the world.

ITC HS Code

841360

Certification Category

Product Standard

Certification/ Standard

ISO

Issuing Agency

Quest Certification (P) Ltd.

Date of Issue

21-12-2015

Date of Expiry

20-12-2018

BRAND INDIA ENGINEERING Certificate of Registration CATALOGUE

This is to certify that compliance of Quality Management System of

SYNO ENGINEERS

K-11, Site - 3, Panki Industrial Area,
Kanpur - 208 022 (U.P.) India

Has been assessed and found to conform to the requirements of

ISO 9001 : 2008

for the scope of activities :

**Designing, Manufacturing and Supply of Progressive Cavity Pumps
& Spare Parts**

Permissible Exclusion : NIL

Certificate No : RO91/JA/1657
JAS-ANZ Accreditation No : M4430310/C

Issue Date : 21.12.2015
Certificate Valid Upto : 20.12.2018



www.jas-anz.org/register

Surveillance Audit : 2nd Year : 01.12.2016
3rd Year : 01.12.2017

For and on behalf of Quest Certification (P) Ltd

[Signature]
Head of Certification

The certificate is valid only if the annual surveillance mark is present.

The Validity of this Certificate can be verified from www.questcertification.com

The Registration does not assure the quality of yields under the firm's production / services

Quest Certification (P) Ltd

Regd Office: Plot No. 44, Door No. 6, 4th Cross Street, NGO Colony, Adambakkam, Chennai - 60, Tamil Nadu, India
Accredited by Joint Accreditation System of Australia and New Zealand (www.jas-anz.org/register)

Certificate Image

Certification Category

Product Standard

Certification/ Standard

CE

Issuing Agency

UK Certification & Inspection Ltd.

Date of Issue

13-09-2016

Date of Expiry

12-09-2017

BRAND INDIA ENGINEERING
E-CATALOGUE

Certificate Image



Certification Category

Product Standard

Certification/ Standard

ATEX

Issuing Agency

Quantus Management System (P) Ltd.

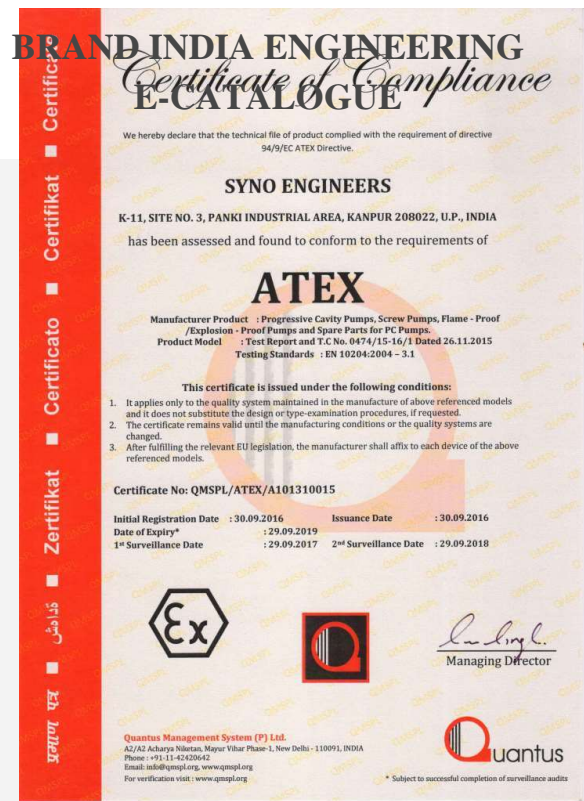
Date of Issue

30-09-2016

Date of Expiry

29-09-2019

Certificate Image



End Use Sectors
Product Images



c Industries7

Dosing & Metering Pumps - 'DC' Series

BRAND INDIA ENGINEERING E-CATALOGUE

Technical Details

Syno 'DC' Series offers a range of Dosing & Metering Pumps with Syno's innovative design, quality workmanship and reliability. This Series is specifically designed for low flow, metering or dosing applications - offering continuous and accurate repeatability. 'DC' Series Pumps are used for feeding intermittently or continuously a controlled quantity of fluid / chemical within pre-determined time or at fixed intervals. The compact 'DC' pumps have high tolerance to aggressive chemicals and the renowned reliability of Syno. The repeatability accuracy has less than 1% fluctuation. These pumps are self priming, and the gentle non pulsating pumping action helps maintain product integrity with even the most difficult materials. The range of suitable substances includes viscous and slurry products, solids in suspension and air/liquid/solids mixtures. These versatile pumps have output directly proportional to speed. These are in hot demand by chemical processors, pharmaceuticals, photo film, textile, cosmetics, petroleum, confectionery, detergent, beverages and host of similar industries.

ITC HS Code

841360

Certification Category

Product Standard

Certification/ Standard

ISO

Issuing Agency

Quest Certification (P) Ltd.

Date of Issue

21-12-2015

Date of Expiry

20-12-2018

BRAND INDIA ENGINEERING Certificate of Registration CATALOGUE

This is to certify that compliance of Quality Management System of

SYNO ENGINEERS

K-11, Site - 3, Panki Industrial Area,
Kanpur - 208 022 (U.P.) India

Has been assessed and found to conform to the requirements of

ISO 9001 : 2008

for the scope of activities :

**Designing, Manufacturing and Supply of Progressive Cavity Pumps
& Spare Parts**

Permissible Exclusion : NIL

Certificate No : RO91/JA/1657
JAS-ANZ Accreditation No : M4430310/C

Issue Date : 21.12.2015
Certificate Valid Upto : 20.12.2018



www.jas-anz.org/register

Surveillance Audit : 2nd Year : 01.12.2016
3rd Year : 01.12.2017

For and on behalf of Quest Certification (P) Ltd

[Signature]
Head of Certification

The certificate is valid only if the annual surveillance mark is present.

The Validity of this Certificate can be verified from www.questcertification.com

The Registration does not assure the quality of yields under the firm's production / services

Quest Certification (P) Ltd

Regd Office: Plot No. 44, Door No. 6, 4th Cross Street, NGO Colony, Adambakkam, Chennai - 60, Tamil Nadu, India
Accredited by Joint Accreditation System of Australia and New Zealand (www.jas-anz.org/register)

Certificate Image

Certification Category

Product Standard

Certification/ Standard

CE

Issuing Agency

UK Certification & Inspection Ltd.

Date of Issue

13-09-2016

Date of Expiry

12-09-2017

BRAND INDIA ENGINEERING
E-CATALOGUE

Certificate Image



Certification Category

Product Standard

Certification/ Standard

ATEX

Issuing Agency

Quantus Management System (P) Ltd.

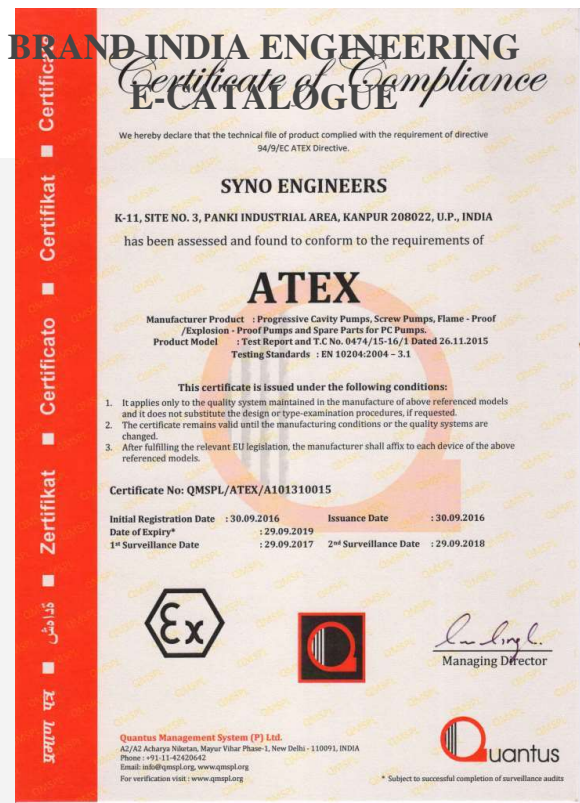
Date of Issue

30-09-2016

Date of Expiry

29-09-2019

Certificate Image



End Use Sectors

Product Images



Food, Sugar & Distillery, Pharmaceuticals, Industries etc.

Barrel Pumps - 'BBC' Series

BRAND INDIA ENGINEERING E-CATALOGUE

Technical Details

Syno 'BBC' Series is comprised of Barrel pumps to empty containers safely and efficiently with the minimum of effort. This is a vertical self-contained pumping unit that efficiently handles relatively large volumes of liquids, including gasoline, fuel oil, and sea water during barge unloading and transfer operations. These Pumps are suitable for numerous applications within the oil, gas, chemical and many manufacturing industries. These pumps meet the demands of complete fluid management as well as provides safeguard from spillage issues. Further, the high safety standards and reliable performance of these pumps also make them perfect to handle corrosive & flammable liquids like gasoline, petroleum products and others. They are perfect for low as well as high viscous liquid. Because of their lower noise and easy maintenance, they are highly preferred.

ITC HS Code

841360

Certification Category

Product Standard

Certification/ Standard

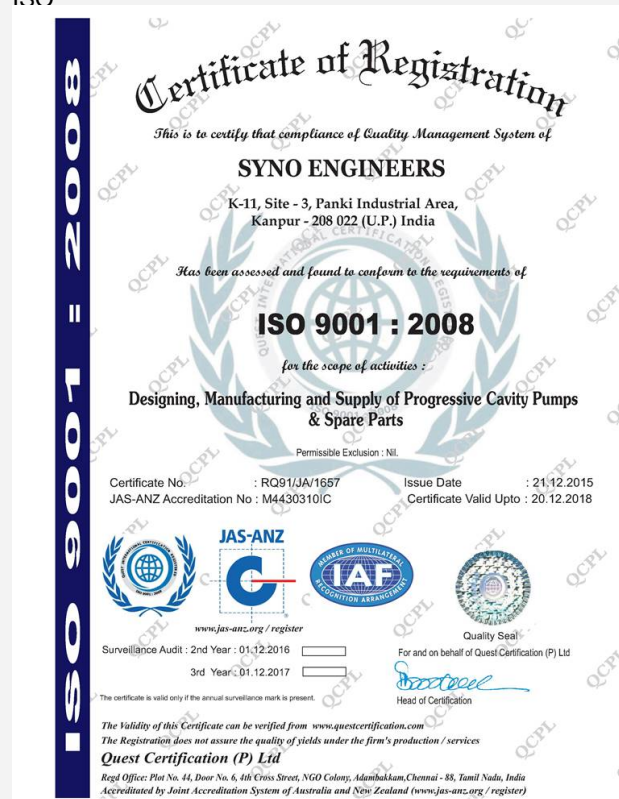
ISO

Issuing Agency

Date of Issue

Date of Expiry

Certificate Image



BRAND INDIA ENGINEERING E-CATALOGUE

Certification Category
Certification/ Standard
Issuing Agency
Date of Issue
Date of Expiry
Certificate Image

Product Standard

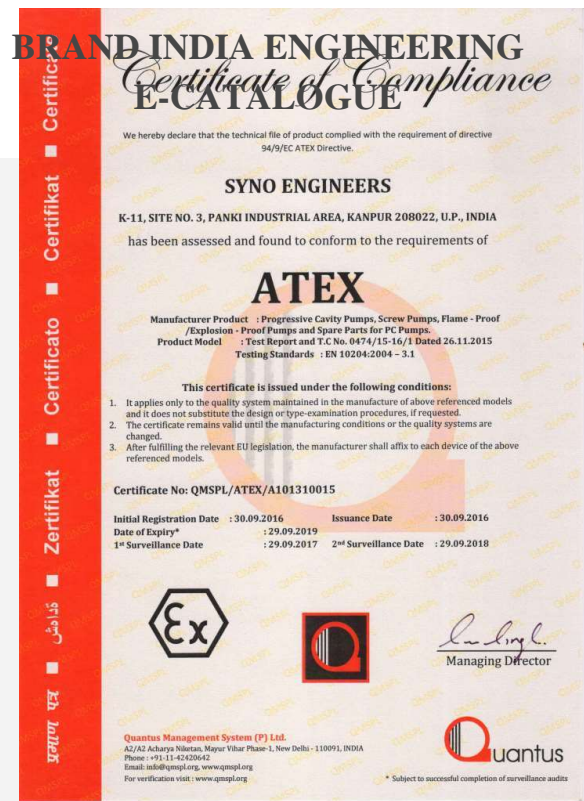
CE



Certification Category
Certification/ Standard
Issuing Agency
Date of Issue
Date of Expiry

Product Standard
ATEX
Quantus Management System (P) Ltd.
30-09-2016
29-09-2019

Certificate Image



End Use Sectors

Product Images



r, Food, Sugar & Distillery, Pharmaceuticals, industries etc.

Grouting & Light Weight Concrete Pump - 'X' Series

BRAND INDIA ENGINEERING E-CATALOGUE

Technical Details

The 'X' Series is built on a robust platform to solve the complex grouting and light weight concrete applications. The pumps are especially designed with quick release Stator so that cleaning is made easy after each batch work. The "X" Series Pump comprises of specially designed Rotor & Stator geometries to suit extreme abrasive applications. Syno has been working closely with OEMs on major construction projects to built grouting systems. With the recent developments in equipment and materials, grouting is now more and more accepted as an efficient method for the treatment of soil and rock formations. Hence, choosing the right equipment is of the utmost importance, which Syno provides. Our Grouting Pumps are high performance pumps which can handle a wide variety of grout mixes including Neat Cement, Bentonite, PFA Cement and Sand Cement Grouts. These Pumps mix the materials in the most efficient manner. The pumping rate can also be adjusted to meet the requirements of the particular ground conditions. Our Grouting Pumps are widely used in different industries automobile, civil & construction and many more.

ITC HS Code	841360
Certification Category	Product Standard
Certification/ Standard	ISO
Issuing Agency	Quest Certification Pvt. Ltd.
Date of Issue	21-12-2015
Date of Expiry	20-12-2018

BRAND INDIA ENGINEERING Certificate of Registration CATALOGUE

This is to certify that compliance of Quality Management System of

SYNO ENGINEERS

K-11, Site - 3, Panki Industrial Area,
Kanpur - 208 022 (U.P.) India

Has been assessed and found to conform to the requirements of

ISO 9001 : 2008

for the scope of activities :

**Designing, Manufacturing and Supply of Progressive Cavity Pumps
& Spare Parts**

Permissible Exclusion : Nil

Certificate No : RO91/JA/1657
JAS-ANZ Accreditation No : M4430310/C

Issue Date : 21.12.2015
Certificate Valid Upto : 20.12.2018



www.jas-anz.org/register

Surveillance Audit : 2nd Year : 01.12.2016
3rd Year : 01.12.2017

For and on behalf of Quest Certification (P) Ltd

[Signature]
Head of Certification

The certificate is valid only if the annual surveillance mark is present.

The Validity of this Certificate can be verified from www.questcertification.com
The Registration does not assure the quality of yields under the firm's production / services

Quest Certification (P) Ltd

Regd Office: Plot No. 44, Door No. 6, 4th Cross Street, NGO Colony, Adambakkam, Chennai - 60, Tamil Nadu, India
Accredited by Joint Accreditation System of Australia and New Zealand (www.jas-anz.org/register)

Certificate Image

Certification Category
Certification/ Standard
Issuing Agency
Date of Issue
Date of Expiry
Certificate Image
Certification Category
Certification/ Standard
Issuing Agency
Date of Issue
Date of Expiry

Product Standard
CE
UK Certification & Inspection Ltd.
13-09-2016
12-09-2017

Product Standard
ATEX
Quantus Management System (P) Ltd.
30-09-2016
29-09-2019

प्रमाण पत्र ■ डामश ■ Zertifikat ■ Certificato ■ Certificat ■ Certificate



Borehole Pump - 'SBH' Series

BRAND INDIA ENGINEERING E-CATALOGUE

Technical Details

Syno "SBH" Series of Borehole Pump is mainly used for raw clean water supply and is ideally suited for Private water supply systems, Industrial systems, lowering of groundwater level, Pressure boosting, Irrigation systems & Geothermal heating system. The Syno Bore Hole pump is the essence of simplicity in design. We carry a large selection of Bore Hole pumps for use in submerged and aboveground water systems. Our pumps are typically installed for use in residential clean water, residential wastewater, industrial, light commercial, agricultural, and municipal water systems. It is capable of handling sand laden water efficiently without due wear tear to its pumping element. Syno designed Rotor and Stator are immersed below draw-down level in the bore or well. The drive head is located at ground level for easy inspection, maintenance and installation. Speed of the pump can be adjusted to match well yield. Provides advantage over irrigation pumps as it can be driven through motor engine or even a tractor which enhanced its benefits especially in remote areas or in areas of frequent power-cuts. "SBH" series is available for 3" to 8" bores.

ITC HS Code	841360
Certification Category	Product Standard
Certification/ Standard	ISO
Issuing Agency	Quest Certification (P) Ltd.
Date of Issue	21-12-2015
Date of Expiry	20-12-2018

BRAND INDIA ENGINEERING Certificate of Registration CATALOGUE

This is to certify that compliance of Quality Management System of

SYNO ENGINEERS

K-11, Site - 3, Panki Industrial Area,
Kanpur - 208 022 (U.P.) India

Has been assessed and found to conform to the requirements of

ISO 9001 : 2008

for the scope of activities :

**Designing, Manufacturing and Supply of Progressive Cavity Pumps
& Spare Parts**

Permissible Exclusion : NIL

Certificate No. : RO91/JA/1657
JAS-ANZ Accreditation No : M4430310/C

Issue Date : 21.12.2015
Certificate Valid Upto : 20.12.2018



www.jas-anz.org/register

Surveillance Audit : 2nd Year : 01.12.2016
3rd Year : 01.12.2017

For and on behalf of Quest Certification (P) Ltd

[Signature]
Head of Certification

The certificate is valid only if the annual surveillance mark is present.

The Validity of this Certificate can be verified from www.questcertification.com

The Registration does not assure the quality of yields under the firm's production / services

Quest Certification (P) Ltd

Regd Office: Plot No. 44, Door No. 6, 4th Cross Street, NGO Colony, Adambakkam, Chennai - 60, Tamil Nadu, India
Accredited by Joint Accreditation System of Australia and New Zealand (www.jas-anz.org/register)

Certificate Image

Certification Category

Product Standard

Certification/ Standard

CE

Issuing Agency

UK Certification & Inspection Ltd.

Date of Issue

13-09-2016

Date of Expiry

12-09-2017

BRAND INDIA ENGINEERING
E-CATALOGUE

Certificate Image



Certification Category

Product Standard

Certification/ Standard

ATEX

Issuing Agency

Quantus Management System (P) Ltd.

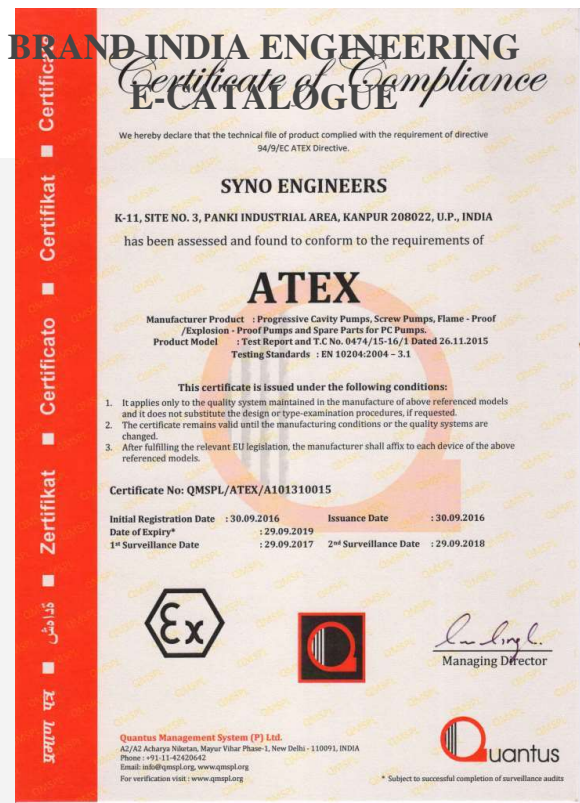
Date of Issue

30-09-2016

Date of Expiry

29-09-2019

Certificate Image



End Use Sectors

Product Images



r, Food, Sugar & Distillery, Pharmaceuticals, industries etc.

SPARE PARTS

BRAND INDIA ENGINEERING E-CATALOGUE

Technical Details

Known for its After Sales, Syno has set a Standard in itself for Sales & After Sales Services. We believe a Company not only grows because of its offered product but for the Services they provide after selling the Product. At Syno, we maintain extensive Stock of Spare Parts on Ready to Use Basis & Trained Personnel Support to Reduce the Down Time. Delivery is usually made within 24-48 hours. WIP is issued soon after the confirmation of Order & the Customer is Updated on the Progress Report from Time to Time. SYNO original spare parts can ensure optimum performance for your pump. Based on the 30 years experience in manufacturing the Progressive cavity pumps and components, knows the criticalities of the dimensions required for your pump to functions smoothly without any downtime. Further endorsed by the customers, it was found that the retrofit spare parts manufactured by us function even better than that of original pump manufacturers. We have a well equipped production unit, loaded with advanced technology machines and tools, enabling us to manufacture and supply a quality range of Pump Spare Part. Our diligent personnel team manufactures these parts using high quality materials, procured from the most authentic vendors. The parts are made available in different thickness and finishing as per the client's requirements. To provide a flawless range at client's end, we check the Pump Spare Part on certain quality parameters. Syno Parts are produced to ISO 9001:2000 using high quality materials, heat treatment processes and coatings. Strict quality procedures ensure the control of accurate manufacturing tolerances, resulting in dimensionally interchangeable parts. The process gives you increased abrasion and corrosion resistance to ensure every replacement part lasts longer, yet still offering you an economical product. All our parts are manufactured under the most stringent quality standards. Additionally, we also provide genuine spare parts and After-Sale Parts for various International brands (Please confirm the pump type and Model number as in your communications. This will ensure that we provide you with a quotation for the correct genuine spare parts). We offer Retrofit Spare Parts for all models of NETZSCH, ROTO & few of MONO, BORNEMANN & SEEPEX Pumps.

ITC HS Code	841360
Certification Category	Product Standard
Certification/ Standard	CE
Issuing Agency	UK Certification & Inspection Ltd.
Date of Issue	13-09-2016
Date of Expiry	12-09-2017
Certificate Image	---
Certification Category	Product Standard
Certification/ Standard	CE
Issuing Agency	UK Certification & Inspection Ltd.
Date of Issue	13-09-2016
Date of Expiry	12-09-2017

BRAND INDIA ENGINEERING
E-CATALOGUE

Certificate Image



Certification Category

Product Standard

Certification/ Standard

ATEX

Issuing Agency

Quantus Management System (P) Ltd.

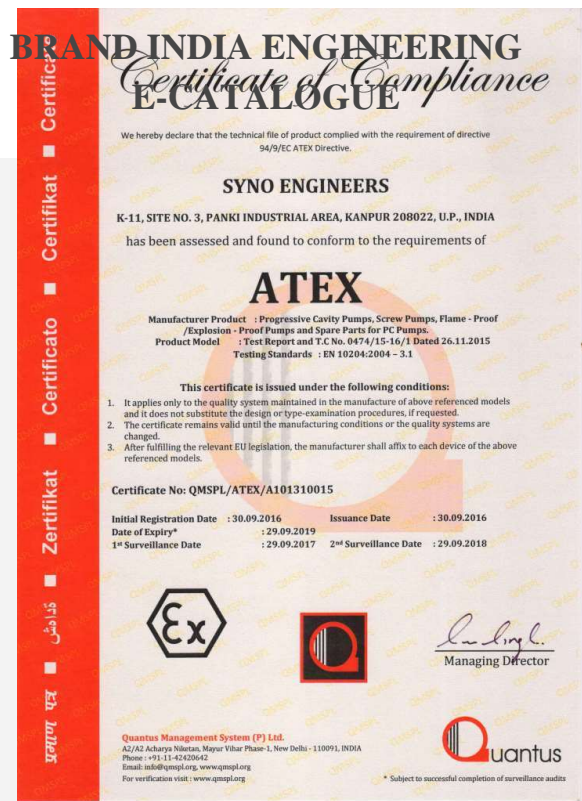
Date of Issue

30-09-2016

Date of Expiry

29-09-2019

Certificate Image



End Use Sectors

Waste Water, Grouting, Pulp & Paper, Food, Sugar & Distillery, Pharmaceuticals, Industries etc.

Product Images



Sectors of Interest

Waste Water, Grouting, Pulp & Paper, Food, Sugar & Distillery, Pharmaceuticals, Oil, Power, Fertilizer and Chemical Industries etc.

Is OEM Supplier?

Indigenous

Is After Sales Service Provider?

Yes

BRAND INDIA ENGINEERING E-CATALOGUE

Importance of niche products	With 40 years of vast experience in fluid engineering spanning over 300 fluid types, 10,000 pumps installed, Syno pumps endeavors to provide world class quality pumps with best-in-industry delivery schedule. Syno pumps also provides spare parts for other brands and repair refurbishing/reverse engineering services. SYNO offers unbeatable competitiveness. Our Pumps are manufactured from high grade components and technologically advanced machinery to ensure higher customer satisfaction. We strictly follow & comply industry standards. Every pump passes through stringent process & quality control plans and is designed to give longer life with consistent performance and trouble free service.
Potential market of niche products	We serve numerous industries including Waste Water, Grouting, Pulp & Paper, Food & Beverage Industry, Sugar & Distillery, Pharmaceuticals, Oil, Power, Fertilizer and Chemical etc.
Product Supply Record	We have successful track record of 40+ years experience in delivering quality pumps and related spare parts.
Patented Technologies	NA
Awards/Accolades	