

**BRAND INDIA ENGINEERING
E-CATALOGUE**

Date: 22-04-2025

MAKALI ENGINEERING CORPORATION

**37, Q ROAD, BELGACHIA
HOWRAH
PIN - 711108**

Er. N.C. CHAUDHURI
PHONE - +91 33
26510473
EMAIL -
mecvalve@vsnl.net
WEB -
www.mecvalve.co.in

MAKALI ENGINEERING CORPORATION with its brand name MEC launched on the market in 1974. Since then the company has been providing its clients with an extensive range of high quality Valves and Sluice Gates to various Water/Sewerage/Sea Water Projects including Steel, Power and Oil Sector. Apart from International/Domestic Standards 'MEC' has its own design for manufacturing special type of Valves/ Sluice Gates trailer made based on chemistry of fluid handled like sea water application and Joints like Dismantling Joints, Mechanical Joints etc. to ease dismantling and re installation of pipe line. With the development of business in course of time MEC started execution of job on turnkey basis in the field of Steel Bridge construction, Water Treatment Plant, Surge Tank for water hammer solution, Pressure Vessels etc. 'MEC' uses the most advanced design programs backed by the latest engineering technologies to provide the clients with the most efficient and cost-effective solution to their Oleo-hydraulic problems. Given below is brief resume of MEC. STATUS : 1. Small Scale Industries Unit. 2. NSIC registered. 3. Accredited ISO 9001:2008. 4. Partnership Organization. YEAR OF ESTABLISHMENT : 1974.

BRAND INDIA ENGINEERING E-CATALOGUE

Products Description

VALVE

Technical Details	BS: 5163, IS: 14846, DIN: 3202
ITC HS Code	848180
Certification Category	Product Standard
Certification/ Standard	ISO
Issuing Agency	KVQA
Date of Issue	29-09-2015
Date of Expiry	28-09-2018

Certificate Image

End Use Sectors

PLANT

Product Images



VALVE

Technical Details	BS: 1868. IS: 5312, API 600
ITC HS Code	848180
Certification Category	Product Standard
Certification/ Standard	ISO
Issuing Agency	KVQA
Date of Issue	29-09-2015
Date of Expiry	28-09-2018
Certificate Image	---
End Use Sectors	WATER, REFINERY, POWER PLANT, SUGAR INDUSTRIES

BRAND INDIA ENGINEERING E-CATALOGUE

Product Images



SLUICE GATE

Technical Details	BS: 7775, AWWA-C501, IS: 3042, IS: 13349
ITC HS Code	848180
Certification Category	System Standard
Certification/ Standard	ISO
Issuing Agency	KVQA
Date of Issue	29-09-2015
Date of Expiry	28-09-2018
Certificate Image	---
End Use Sectors	PLANT, REFINERIES.
Product Images	



VALVE

Technical Details	BS: 5155, IS: 13095, API600, AWWA 504, AWWA C-516.
ITC HS Code	848180
Certification Category	System Standard

BRAND INDIA ENGINEERING E-CATALOGUE

Certification/ Standard

ISO

Issuing Agency

KVQA

Date of Issue

29-09-2015

Date of Expiry

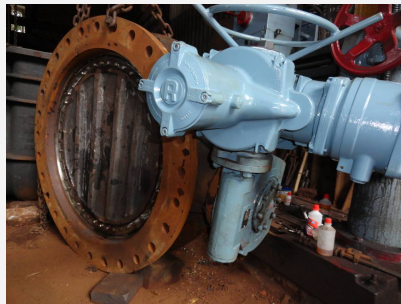
28-09-2018

Certificate Image

End Use Sectors

WATER SUPPLY, SUGAR INDUSTRIES

Product Images



Sectors of Interest

WATER SUPPLY, REFINERY, POWER PLANT, STEEL PLANT, SUGAR PLANT.

Is OEM Supplier?

Indigenous

Is After Sales Service Provider?

Yes

Importance of niche products

Apart from International/Domestic Standards 'MEC' has its own design for manufacturing special type of Valves/ Sluice Gates trailer made based on chemistry of fluid handled like sea water application and Joints like Dismantling Joints, Mechanical Joints etc. to ease dismantling and re-installation of pipe line.

Potential market of niche products

AFRICA, LATIN AMERICA, MIDDLE-EAST, NEPAL, BHUTAN, BANGLADESH, SRILANKA, MYANMAR, AUSTRALIA,

Product Supply Record

Patented Technologies

Awards/Accolades