

**BRAND INDIA ENGINEERING  
E-CATALOGUE**

Date: 15-03-2025

# **REMI ELEKTROTECHNIK LIMITED**

**REMI HOUSE, 11, Cama Industrial  
Estate, Walbhat Road, Goregaon East,  
Mumbai 400063. Maharashtra, India  
MUMBAI  
PIN - 400063**

**Sunil Saraf**  
**PHONE - +91 22 40589888**  
**EMAIL -**  
[\*\*exports@remilabworld.com\*\*](mailto:exports@remilabworld.com)  
**WEB -**  
[\*\*www.remilabworld.com\*\*](http://www.remilabworld.com)

REMI one of India's most trusted brands, founded in 1960, headquartered in Mumbai, is a global Laboratory and Blood Banking Instruments manufacturer and exporter with a presence in 50 countries across the globe. Today, REMI is the industry leader in manufacturing Laboratory/ Magnetic Stirrers & Centrifuges, & Blood Bank Refrigerators / Freezers catering to over 50% of the total Indian demand. Our manufacturing facilities adhere to WHO-GMP guidelines, with ISO 9001-2015 certification for design, manufacturing and supply of Laboratory & Blood Banking Instruments & ISO-13485:2016 for medical devices. REMI pioneer in manufacturing Centrifuges / Refrigerated Centrifuges , Refrigerators / Deep Freezers / Ultra Low Deep Freezer, Thawing Baths, Donor Chair / Therapeutic Chairs / Portable Chairs, Blood Collection Monitors, Tube Stripper, Plasma Freezers, Plasma Expresser, Double Pan Balance / Centrifuge Bucket Equalizer, Data Logger, Platelet Incubator / Agitators, Tube Sealers, Incubator / Oven / Water bath, Shakers / Mixers / Stirrers, Blood Bank Refrigerators, Cooling Incubator etc. REMI Laboratory instruments have wider utility in Clinical Diagnostics, chemical testing & difference research application such as Virology, Agricultural, Biotechnology, Pharmaceutical & Veterinary. REMI Healthcare equipment's focus on Blood Banking, Medical Diagnostics, Critical care, Patient support & Therapy support segments.

[\*\*Products Description\*\*](#)

## BRAND INDIA ENGINEERING E-CATALOGUE

Product Category

Instruments & Appliance

Product Sub-Category

Therapeutic Appliances

Technical Details

HEMODIALYSIS CHAIR / CHEMOTHERAPY CHAIR / THERAPEUTIC CHAIRS  
The innovative design of the Dzire 3X Therapeutic Chair underlines the high quality Standards. The comfortable upholstery creates a pleasant environment and feeling of wellbeing for patients. Three electric motors offer simple and smooth movements of all desired positions further adding to patient relaxation whilst receiving treatment. The remote control provides greater flexibility as all desired chair positions can be adjusted easily.

ITC HS Codes

940210, 94021090

Certification/ Standard

ISO 13485

Issuing Agency

---

Date of Issue

Date of Expiry

End Use Sectors

Product Images



## BRAND INDIA ENGINEERING E-CATALOGUE



### Laboratory Centrifuge

Product Category

Instruments & Appliance

Product Sub-Category

Instruments & Appliance

## BRAND INDIA ENGINEERING E-CATALOGUE

### Technical Details

Laboratory Centrifuges model R-8C Plus & R-8M Plus are suitable for routine sample analysis in Medical, Hospital, Pathology and heads and adaptors, those units are truly versatile. SALIENT FEATURES Automatic rotor identification, ensures operator safety Stainless Steel centrifuge Chamber, easy to clean Brushless Induction motor with variable frequency drive Microprocessor controller with digital display Stable speed output even under unstable voltage conditions Smooth & soft start Low sample temperature rise Inverter fault detection with auto shutdown 7 segment LED display of speed (R-8C Plus/R-12C Plus) Alphanumeric LCD display of speed & RCF (R-8M Plus) Selection of 3 acceleration & deceleration profiles (R-8M Plus) Digital countdown timer & continuous run Safety lid interlock to prevent lid opening during centrifugation Imbalance detection & centrifugation stop with display of error Dynamic brake for quick deceleration Motor overload protection Gas hinge to prevent door falling Emergency lid lock release Last set parameters recall (Useful for repetitive analysis) Wide variety of rotors & reduction adaptors

ITC HS Codes

901890, 84211999

Certification/ Standard

ISO 13485

Issuing Agency

---

Date of Issue

09-04-2018

Date of Expiry

End Use Sectors

Bio chemistry,

Product Images



**BRAND INDIA ENGINEERING  
E-CATALOGUE**



**BRAND INDIA ENGINEERING**

Swing Out Rotors for R-8C Plus & R-8M Plus  
**E-CATALOGUE**

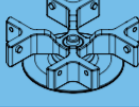

Image of Tube	Metal Buckets suitable for Swing Out Rotor S 4-100								
	B 100			B 9-5					
	Swing Out Rotor S 4-100 Max. Speed RPM 4000 Max RCF (g) 2500								
Tube Capacity (ml)	100	50	50	30	15	15	10	6	5
Type of Tube	Glass	Glass	Falcon®	Glass	Glass	Falcon®	Vacutainer®	Vacutainer®	Vacutainer® short
Ø x L (mm)	45.5 x 104	30 x 110	29 x 116	24 x 110	17 x 110	16.5 x 120	15.5 x 106	12.5 x 106	12.5 x 81
Bucket No.	B 100	B 100	B 100	B 100	B 100	B 100	B 100	B 100	B 9-5
Insert Cat. No.	-	RA 157	RA 161F	RA 158	RA 166	RA 160F	RA 168	RA 167	-
Tubes supplied	Yes	Yes	No	Yes	Yes	No	No	No	No
No of tubes/Insert	1	1	1	1	3	3	3	4	9
No of tubes/rotor	4	4	4	4	12	12	12	16	36

Image of Tube	Swing Out Rotor S 8-15							
	Max. Speed RPM 4500 Max RCF (g) 3440							
								
Tube Capacity (ml)	15	13	8	6	5	5	3	3
Type of Tube	Glass	Borosil Glass	Glass	Vacutainer®	Glass	Vacutainer® short	Glass	Glass
Ø x L (mm)	17 x 110	15 x 125	12 x 100	12.5 x 106	12 x 75	12.5 x 81	10 x 75	
Insert Cat. No.	-	-	RA 154	RA 163	RA 153	RA 162	RA 152	
Tubes supplied	Yes	No	Yes	No	Yes	No	Yes	
No of tubes/Insert	1	1	1	1	1	1	1	
No of tubes/rotor	8	8	8	8	8	8	8	

Technical Data			
Models		R-8C Plus R-8M Plus	R-12C Plus
Max. Speed	rpm	6000	16000
Max. RCF	'g'	5070	21000
Max. Capacity	ml	400	40
Digital timer range	Min	0-99	0-15
Noise		≤ 60 dB	≤ 60 dB
WxDxH	mm	380x470x300	380x470x300

Supply:220-240Volts 50 Hz Single Phase.

**Blood Donor Couch / Chair**

Product Category

Instruments & Appliance

Product Sub-Category

Instruments & Appliance

Technical Details

Head rest adjustable for any comfortable position Cushioned body supports for extra comfort Movable [horizontal & vertical] fully padded broad armrests with glass holders Adjustable foot rest with removable transparent plastic cover Anti-fungal, Anti-bacterial, easy to clean leatherette upholstery Sturdy & stable steel construction, allows load carrying capacity up to 200 kg Best in class Dual lock, Anti-skid, Anti-static PU castors Tissue paper/Towel holder 2/3 independent motors for height, back & foot movements Infusion stand, adjustable both sides (with set of 3 trays -optional]

ITC HS Codes

940210, 94021090

Certification/ Standard

ISO 13485

Issuing Agency

---

## BRAND INDIA ENGINEERING E-CATALOGUE

Date of Issue  
Date of Expiry  
End Use Sectors  
Product Images



**Comfort**  
**Hygiene**  
**Safety**





## BRAND INDIA ENGINEERING E-CATALOGUE



### Refrigerated Centrifuge for Blood Component Separation

Product Category	Instruments & Appliance
Product Sub-Category	Instruments & Appliance
Technical Details	REMI™s KBM 80Plus is large capacity centrifuge to support 12 blood bags rotor head. Extra powered motor & re-engineered thermodynamics ensures sturdy performance & excellent temperature controls.
ITC HS Codes	901890, 84211999
Certification/ Standard	ISO 13485
Issuing Agency	---
Date of Issue	09-04-2018
Date of Expiry	08-04-2021
End Use Sectors	Blood Banks



**BRAND INDIA ENGINEERING  
E-CATALOGUE**

Product Images



**KBM 80 Plus**



Packed Cells



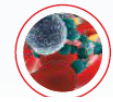
Platelet Concentrate



Platelet Rich Plasma



Cryoprecipitate



Specially designed rotor  
high volume (6X2000ml)  
capacity to process  
**12 blood bags.**



**Packed Cells**



**Platelet Concentrate**



**Platelet Rich Plasma**



**Cryoprecipitate**



**Buffy Coat Separation**

## BRAND INDIA ENGINEERING

### E-CATALOGUE

#### Rotor Head & Bucket Set for 12 Blood Bag Capacity



**K 751**

6 place rotor to hold 6 metal carrier K 753

**PB 753 L / PB 753 M**  
Set of 6 plastic bucket  
(suitable for 2 blood bags of 450 / 350 ml)



**K 753**

Set of 6 metal carrier each to hold 2 bag  
(bucket volume 2 x 6 x 1000 ml)



**PB 753 BF**

Set of 6 plastic bucket with hanger  
(for buffycoat component processing)

#### Technical specifications

Parameter	Unit	KBM 80 Plus
Process controls	Type	Bi-directional encoder
Menu driven program	Nos	99
Acceleration profile	Steps	1 - 9
Deceleration profile	Steps	1- 9 & coasting
Max. speed	RPM	4200 settable $\pm 10$ RPM
Max. RCF	g	6000
Max time	hh:min	0 to 99 hr 59 min
Dimension (W X D X H)	mm	840 X 940 X 950
Recommended line voltage corrector	KVA	6
Compliance		IEC 61010-1:2016, EN 60601-1, EN 60601-1-2, CE, US FDA

Supply : 220-240 volts, 50Hz, Single phase

### Blood Collection Monitor

Product Category	Instruments & Appliance
Product Sub-Category	Instruments & Appliance
Technical Details	REMI BCM-20 Ultra, Next generation blood collection monitor with interactive multicolor LCD display. Helps technicians to follow the SOP's ensuring standardization of the collection process. Removable magnetic tray ensures easy maintenance & transportation. The long lasting battery backup of 24 Hrs makes it an ideal choice for outdoor camps.
ITC HS Codes	901890, 90189099
Certification/ Standard	ISO 13485
Issuing Agency	---
Date of Issue	09-04-2018
Date of Expiry	08-04-2021
End Use Sectors	Blood Banking

## BRAND INDIA ENGINEERING E-CATALOGUE

Product Images



### Blood Bank Refrigerator

Product Category	Instruments & Appliance
Product Sub-Category	Instruments & Appliance
Technical Details	EMI BLOOD STORAGE REFRIGERATORS ARE SPECIALLY DESIGNED TO MEET THE STORAGE REQUIREMENTS OF WHOLE BLOOD & PACKED RED CELLS.
ITC HS Codes	901890, 84184010
Certification/ Standard	ISO 13485
Issuing Agency	---
Date of Issue	09-04-2018
Date of Expiry	08-04-2021
End Use Sectors	Blood Banking

**BRAND INDIA ENGINEERING**  
**E-CATALOGUE**

Product Images



**Deep Freezers**

Product Category	Instruments & Appliance
Product Sub-Category	Instruments & Appliance
Technical Details	REMI's new range of ultra-low deep freezer is specially designed for faster temperature pull down & optimized cryopreservation. Highly sensitive microprocessor control ensures precise temperature management of different temperature variant models at -20, -40 & -86 C
ITC HS Codes	901890, 84184010
Certification/ Standard	ISO 13485
Issuing Agency	---
Date of Issue	09-04-2018
Date of Expiry	08-04-2021
End Use Sectors	Blood Bank, Laboratory, Research

**BRAND INDIA ENGINEERING  
E-CATALOGUE**

Product Images



**Platelet Incubator Agitator**

Product Category	Instruments & Appliance
Product Sub-Category	Instruments & Appliance
Technical Details	REMI Platelet Incubator & Agitator are specially designed to meet the storage requirements of Platelet concentrate.
ITC HS Codes	901890, 90189099
Certification/ Standard	ISO 13485
Issuing Agency	---
Date of Issue	09-04-2018
Date of Expiry	08-04-2021
End Use Sectors	Blood Banks

**BRAND INDIA ENGINEERING  
E-CATALOGUE**

Product Images



**Refrigerated Centrifuge (Neya Centrifuge)**

## BRAND INDIA ENGINEERING E-CATALOGUE

Product Category

Instruments & Appliance

Product Sub-Category

Instruments & Appliance

Technical Details

REMI, market leader in centrifuges with over 55 years of manufacturing experience, combined with European design and style, makes a perfect combination and characteristics suitable for all the operational needs of modern laboratories. • Automatic rotor detection, check of presence of accessories and compatibility with maximum speed • Safety speed limiter function • 10 storable programs with protection function • Setting of speed in RPM and RCF • Short Spin function and precool (NEYA 16R) • Temperature range from 0°C to +40°C (NEYA 16R) • Controlled by microprocessor and backlit color LCD display with contemporary visualization of all parameters • Digital adjustment of acceleration and deceleration levels • Stainless steel internal bowl with optimal height for loading and unloading of samples • Imbalance detection system with automatic functioning stop to avoid accidents • Automatic locking system of the lid • Safety opening of the lid in case of absence of electric power • Brushless motor maintenance free and no carbon deposits • Construction in accordance with European directives

ITC HS Codes

901890, 84211999

Certification/ Standard

ISO 13485

Issuing Agency

---

Date of Issue

Date of Expiry

End Use Sectors

Product Images





## BRAND INDIA ENGINEERING E-CATALOGUE

Product Category

Instruments & Appliance

Product Sub-Category

Instruments & Appliance

Technical Details

REMI Cold Cabinets are designed for bio sample storage applications in pharmaceutical, microbiology, biotechnology, chemical & research labs.

ITC HS Codes

901890, 84184010

Certification/ Standard

ISO 13485

Issuing Agency

Date of Issue

Date of Expiry

End Use Sectors

Product Images



## BRAND INDIA ENGINEERING E-CATALOGUE



### CYCLOMIXERS / VORTEX MIXERS

Product Category	Instruments & Appliance
Product Sub-Category	Instruments & Appliance
Technical Details	<b>SALIENT FEATURES</b> Designed for mixing liquids in Schools, Laboratories & Factories Touch/ Continuous Operation mode Selection through bi-directional Switch Speed Regulation through knob provided on the control panel Interchangeable mixing heads for use with variety of tubes Supplied with all interchangeable mixing heads
ITC HS Codes	901890, 84798200
Certification/ Standard	ISO 13485
Issuing Agency	---
Date of Issue	09-04-2018
Date of Expiry	08-04-2021
End Use Sectors	Hospitals, Laboratory

## BRAND INDIA ENGINEERING E-CATALOGUE

Product Images



**CM-101 Plus**

Sectors of Interest	Laboratory, Blood Banking, Healthcare, Medical Devices
Is After Sales Service Provider?	Yes
Importance of niche products	Laboratory, Blood Banking Instruments, Medical Devices REMI is the industry leader in manufacturing Laboratory/ Magnetic Stirrers & Centrifuges, & Blood Bank Refrigerators / Freezers catering to over 50% of the total Indian demand. Our manufacturing facilities adhere to WHO-GMP guidelines, with ISO 9001-2015 certification for design, manufacturing and supply of Laboratory & Blood Banking Instruments & ISO-13485:2016 for medical devices.
Potential market of niche products	North America Europe Asia Pacific Middle East Africa
Product Supply Record	REMI, today, is a global Laboratory and Blood Banking Instruments manufacturer and exporter. The world class quality products and its talented team of professionals make it a premier player in the country, with a presence in 50 countries across the globe.
Patented Technologies	Widest range of products & models under one roof Customization of products to suit individual customer requirements Delivering complete & cost-effective solutions for Blood Banking Strong emphasis on Quality at every stage of manufacturing process Manufacturing experience of over 50 years Service excellence you can count on A customer friendly and a passionately motivated team
Awards/Accolades	